



# // RESILIENT TOGETHER //

2022 Partner Exchange

## Technology Talk

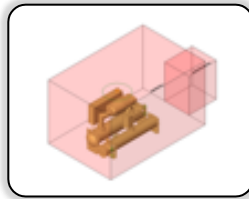
TRACE® 3D Plus and Trane® Design Assist™

9/20/2022

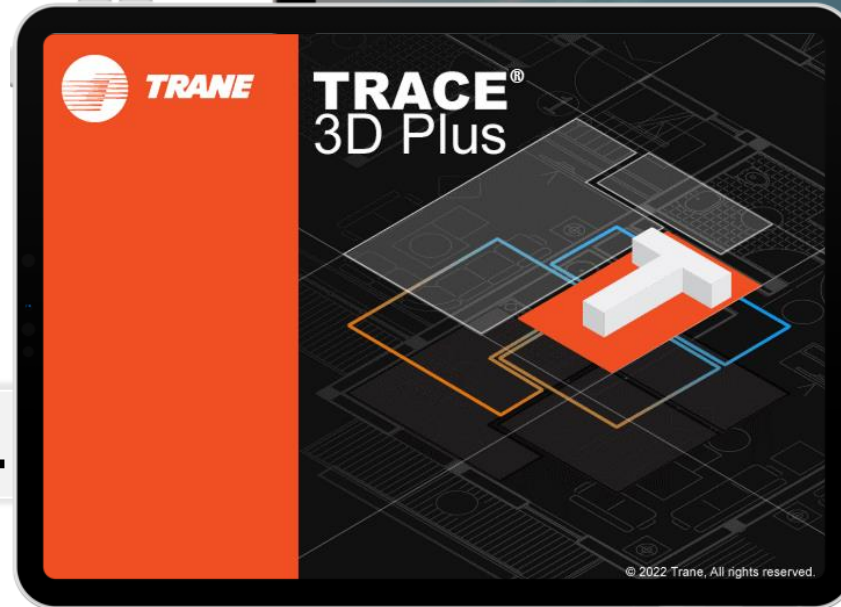
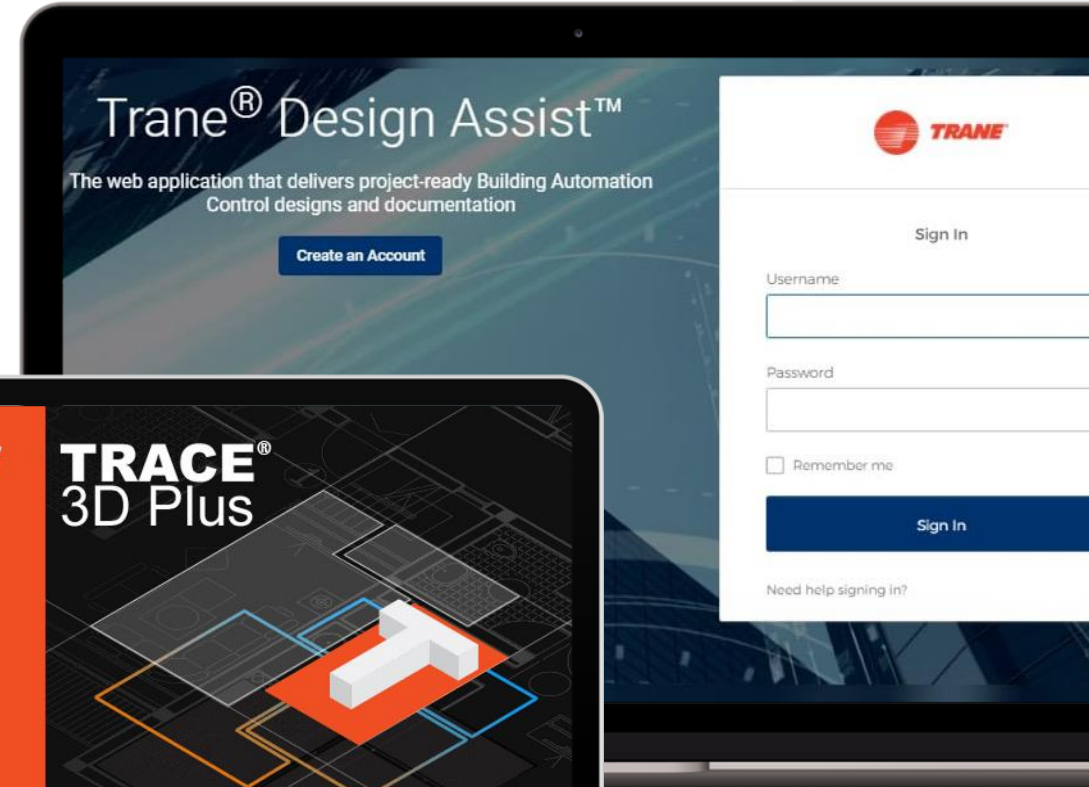


# Trane is here to help!

For more than 50 years Trane has been developing software to help design, build and maintain better buildings.



Temperature	PLV	CR
46.1° F	0.531	
78.1° F	0.503	
85% 81.8° F	0.525	
85% 82.1° F	0.526	
85.0° F	0.516	

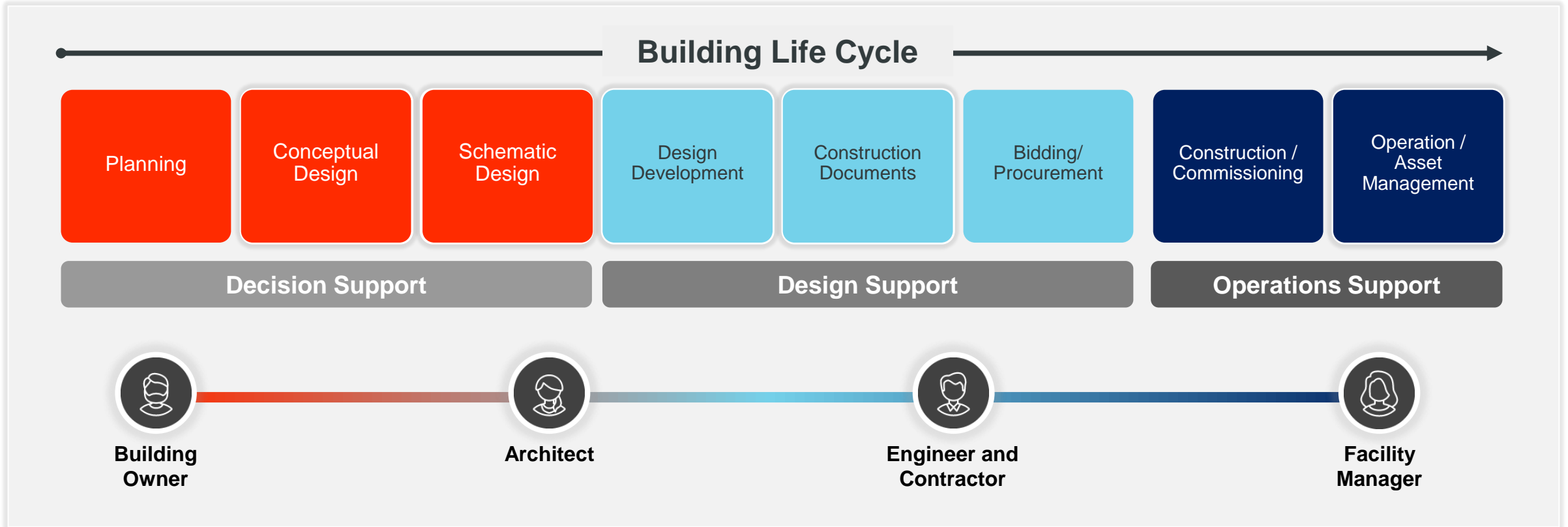


Today we will be focusing on two...

# Trane tools improve productivity!



TRACE® 3D Plus and Trane Design Assist can help within multiple stages of the building life cycle!





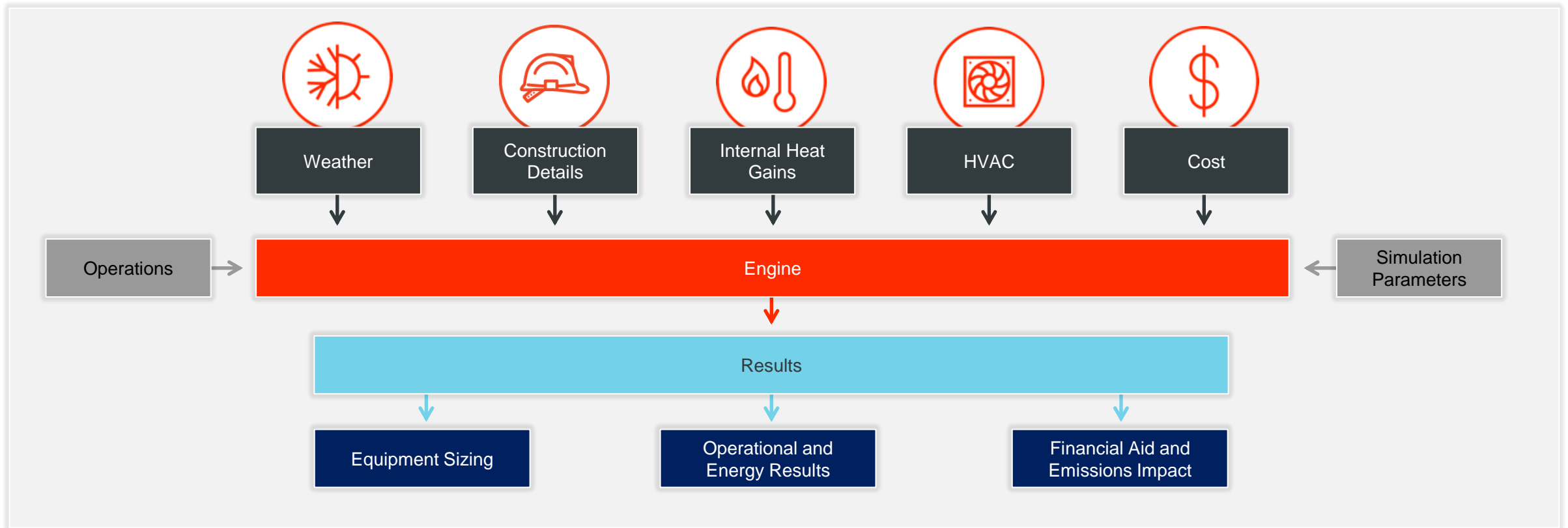
**TRANE**

# TRACE<sup>®</sup> 3D Plus

Overview

# What is TRACE<sup>®</sup> 3D Plus?

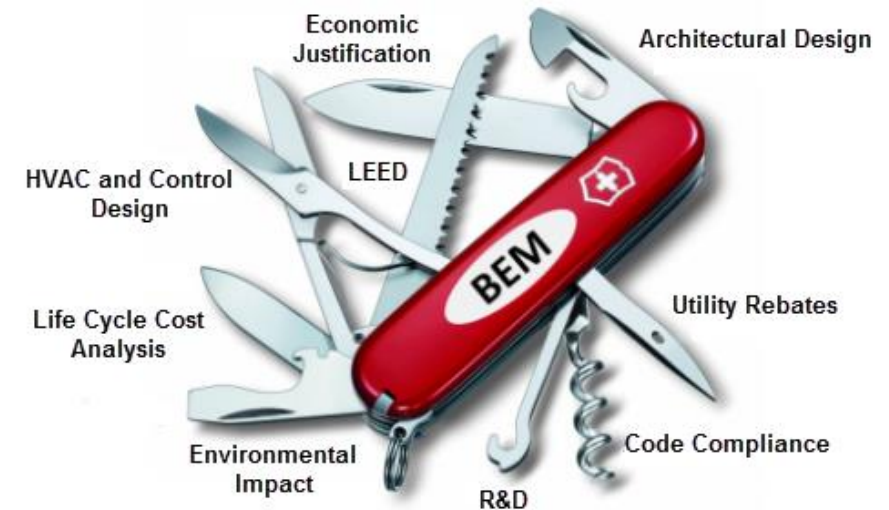
- TRane Air Conditioning Economics
- Virtual physics-based replica of a building using EnergyPlus
- Subscription based platform including support



# Where Can TRACE® 3D Plus Help?



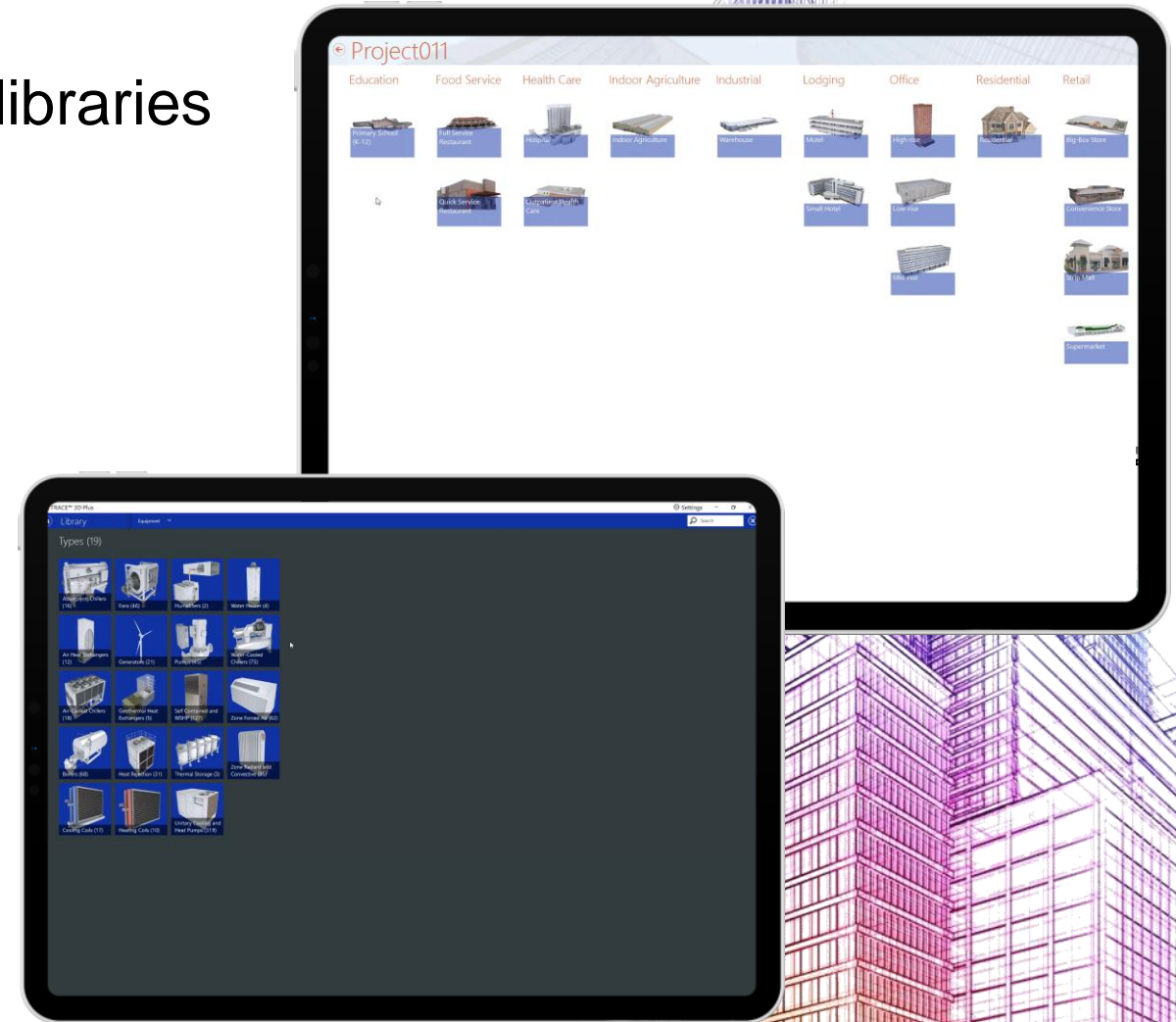
- Quick early/conceptual stage analysis
- Accurate equipment sizing
- Code compliance or building ratings
- Energy, life cycle cost, or utility optimization/rebates
- Carbon footprint, emissions, and renewal energy analysis
- Monetization of retrofit/renovations



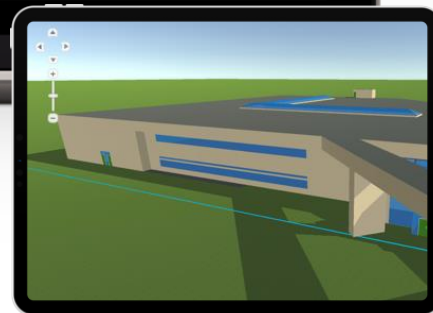
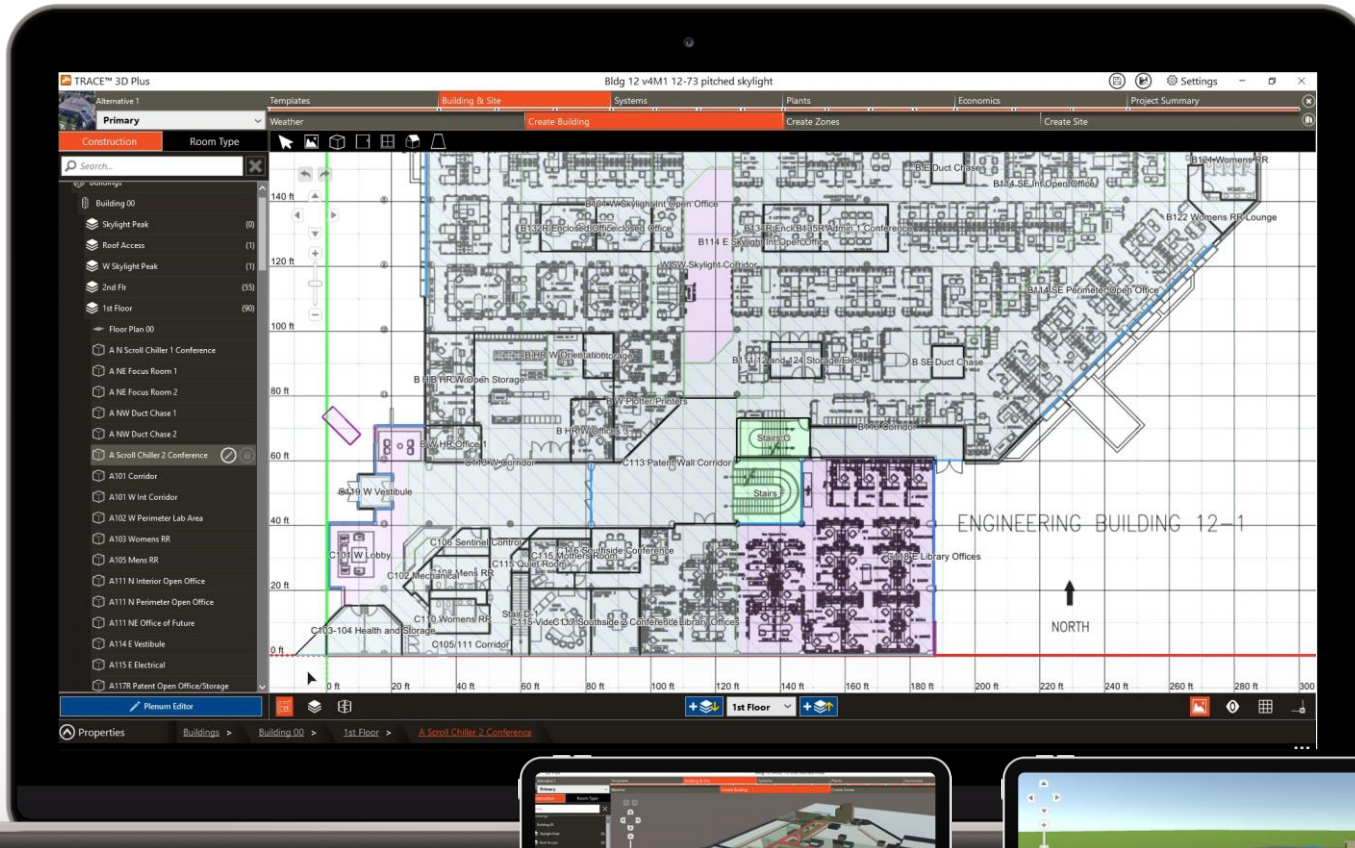
# Conceptual or Schematic Design – Efficiency



- Pre-configured building themes
- Thousands of pre-loaded and scalable libraries
- Simple, quick building wizard
- Industry standard defaults
- Built-in intelligence and validation
- Quickly compare up to 20 alternatives
- Great for “ballpark” EUI or utility costs



# Design Development - Scalability



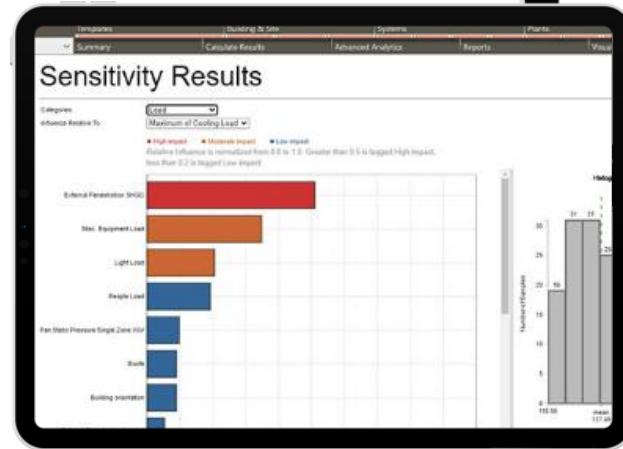
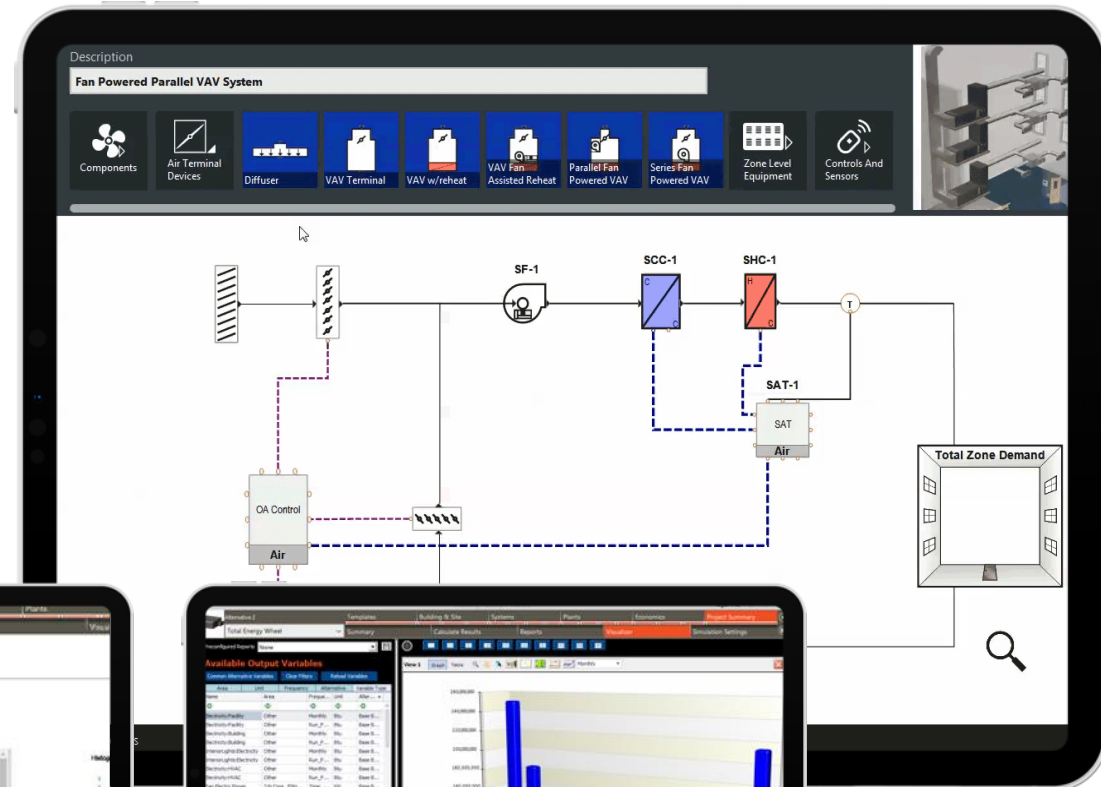
- Import or trace over building geometry
- Seamless load design integration
- Customize building themes, templates and libraries
- Quickly apply mass model changes
- Compare up to 20 alternatives
- Simulate alternatives simultaneously using the cloud



# Design Development - Productivity



- Schematic configurations
- Guided wizards
- Built-in intelligence
- Sensitivity and parametric analysis
- Graphic rich reports
- Data visualization



# What's new in TRACE® 3D Plus!



Improved simulation speed



Auto-sizing of cooling supply air temperature



Central W/GSHPs



Expanded undo/redo



Expanded checksums reports



Zoom to room



Improvements to load design reports and gbXML import

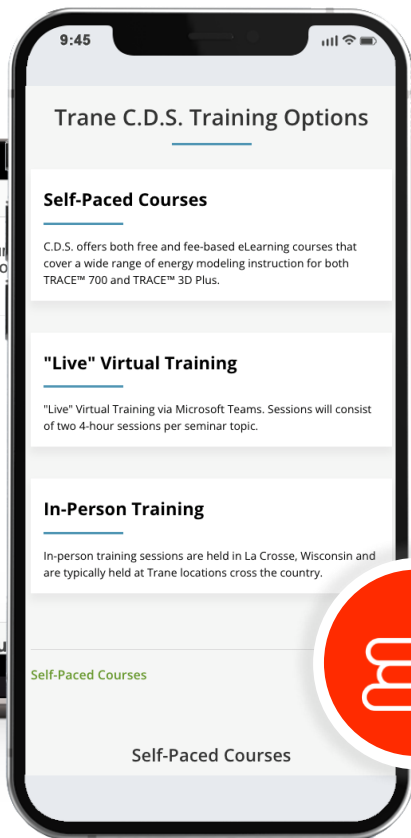
Coming  
Soon!

## What's coming soon?

- ASHRAE® 170 support
- New Load/Airflows report
- Spreadsheet capabilities
- Title 24 and ASHRAE® 90.1-2019 libraries
- Latent sizing options
- Improved air transfer model
- Export to LightStanza (Daylighting)
- Expanded heat recovery features
- Improved performance
- Silent installation option

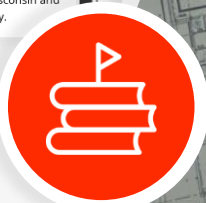
**And more!**

# Training and Support Options



## Standard curriculum with flexible options

- Load Design
- Energy and Economics



## Active subscriptions include world-class support

- E-mail
- Phone with screen sharing
- Comprehensive web-based knowledge center
- Engineers with years of industry experience



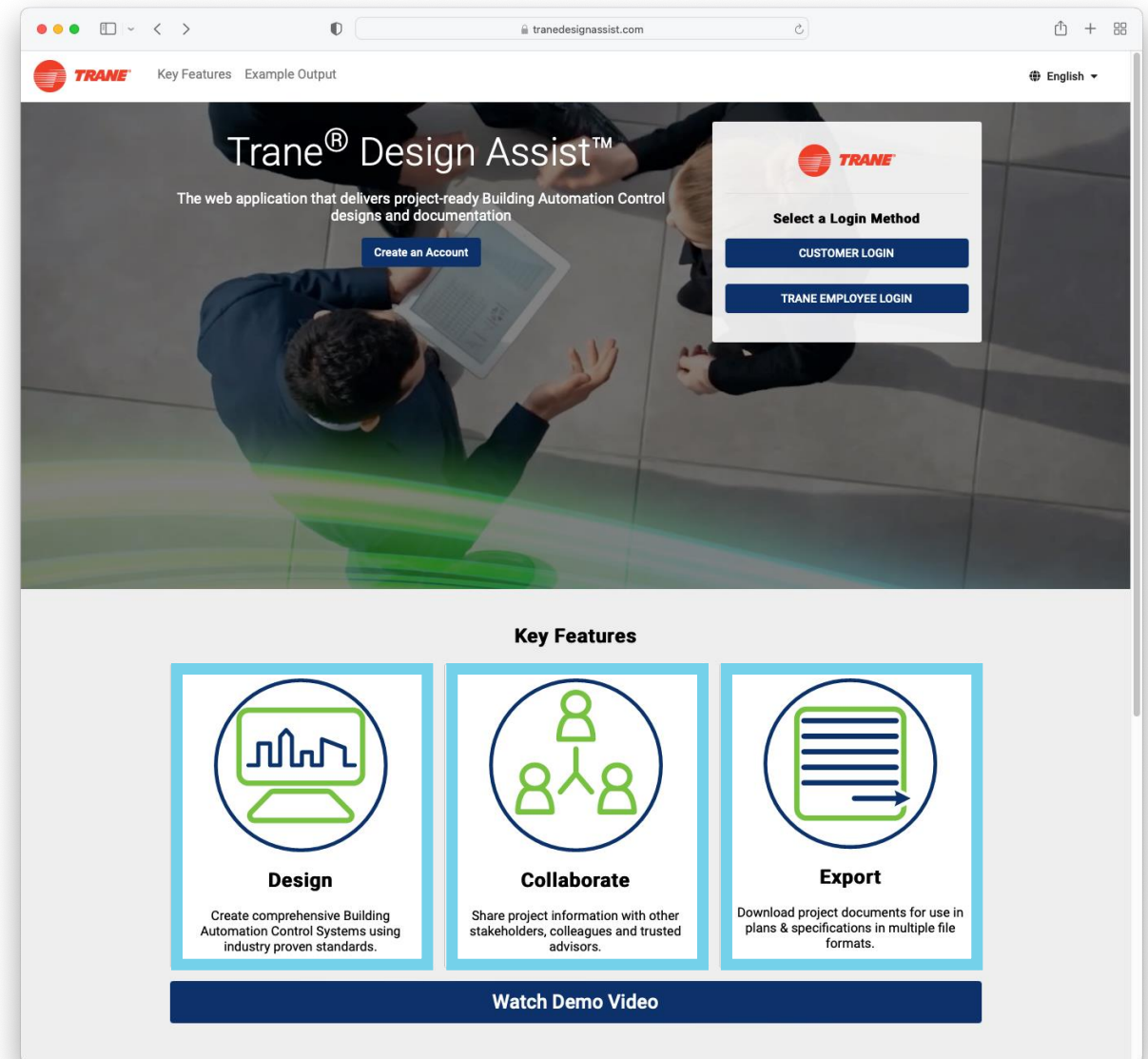
# Trane<sup>®</sup> Design Assist<sup>™</sup>

Overview

# What is Trane® Design Assist™?



- Project designs and documentation for Building Automation Systems
- Web-based resource
- Manufacturer agnostic designs
- Complimentary, no licenses or fees



# Where Can Trane® Design Assist™ Help?



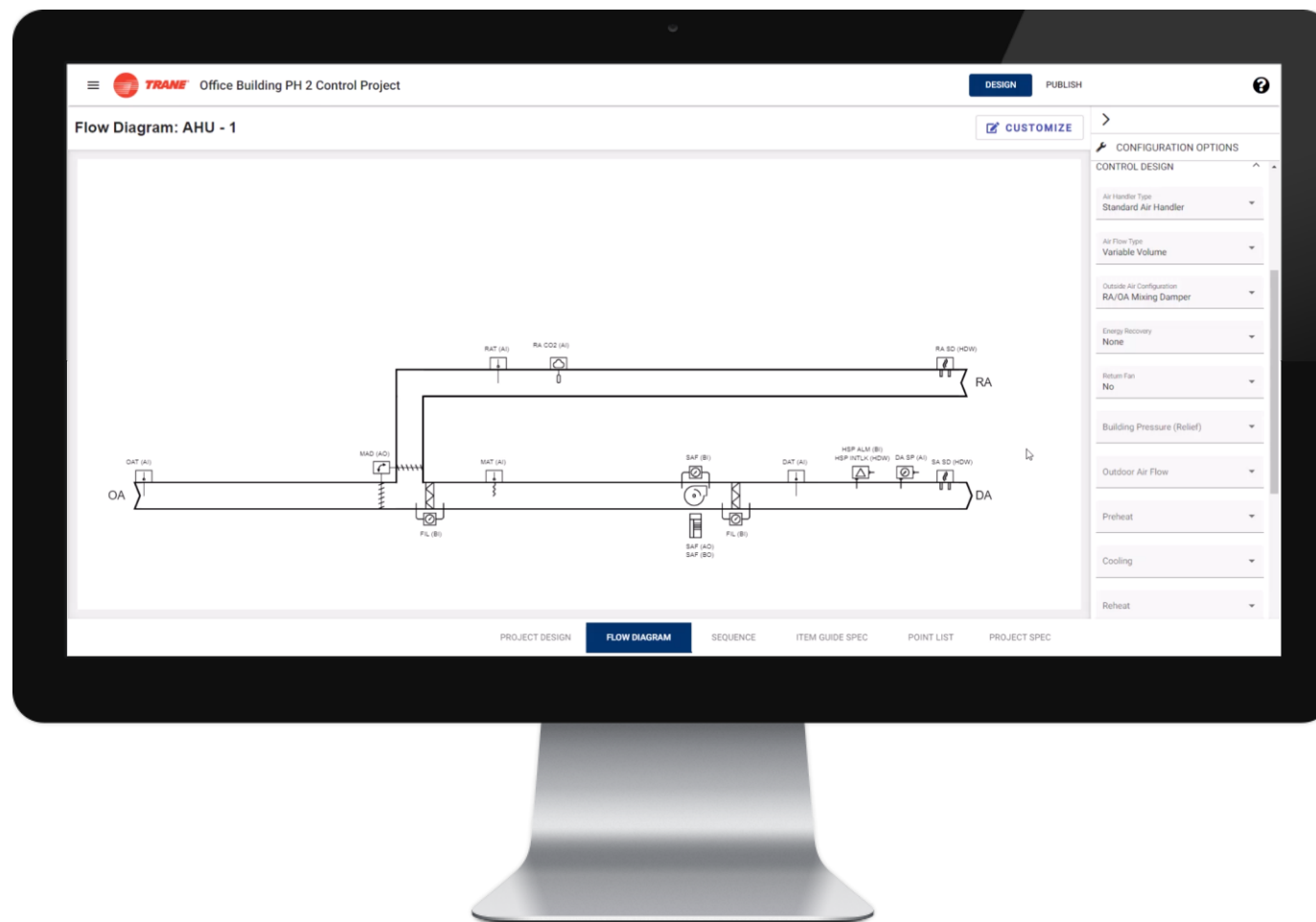
- Streamlined workflow
- Jumpstart design efficiencies
- Industry standards and proven / leading strategies
- Self-service access to:
  - Project Layouts
  - Flow Diagrams
  - Sequence of Operations
  - Points List
  - Project Guide Specifications



# Schematic & Design Development – Reliability



- Build scalable project designs faster
- Consistencies within using Systems approach
- Flexibility in configuration options
- Customization features
- Saves times and prevents omissions





# Design Development – Collaboration



- Share projects with other stakeholders, colleagues and trusted advisors
- Enhance productivity through increased communication
- Network sharing with other subject matter experts
- Faster problem solving and decision making
- Overall project delivery is accelerated

Share Project

Email

ADD

Name	Email	Allow Copy	Delete
User 1	User1@email.com	<input checked="" type="checkbox"/>	×
User 2	User2@email.com	<input type="checkbox"/>	×
User 3	User3@email.com	<input checked="" type="checkbox"/>	×

SAVE CANCEL



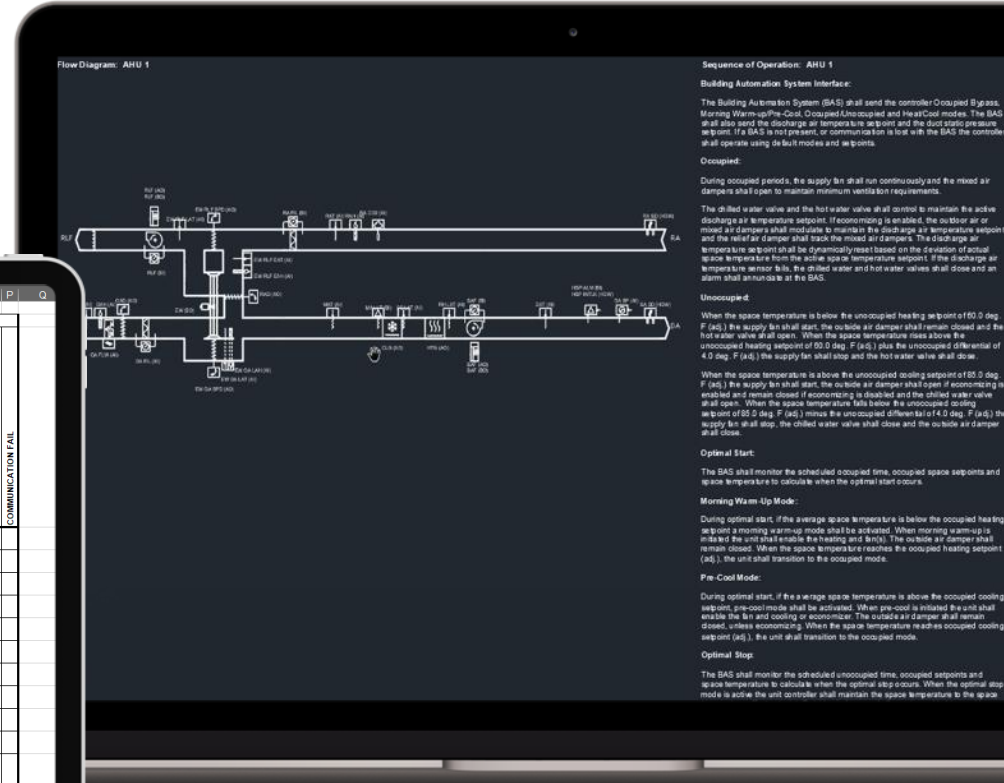
# Construction Documents – Accessibility



- Synchronized drawings and specifications
- Consistent and professional formats
- Expedited delivery of construction ready documents
- Supported file types:



Points List: AHU 1		POINTS										ALARMS			
System Point Description		ANALOG HARDWARE INPUT (AI)	BINARY HARDWARE INPUT (BI)	ANALOG HARDWARE OUTPUT (AO)	BINARY HARDWARE OUTPUT (BO)	SOFTWARE POINT (SF)	HARDWARE INTERLOCK (HW)	WIRELESS (WLS)	NETWORK (NET)	SOFT ANALOG LIMIT	SOFT ANALOG LIMIT	BINARY	LATCH/DIAGNOSTIC	SENSOR FAIL	COMMUNICATION FAIL
3	COOLING COIL LEAVING TEMPERATURE CC LAT	X	X							X	X			X	
4	COOLING OUTPUT COMMAND CLS	X			X										
5	DISCHARGE AIR TEMPERATURE DAT	X	X							X	X			X	
6	DISCHARGE AIR STATIC PRESSURE LOCAL DA SP	X	X							X			X	X	
7	ENERGY WHEEL COMMAND EW	X			X										
8	ENERGY WHEEL ENTERING RELIEF AIR HUMIDITY EW RLF EAH	X	X											X	
9	ENERGY WHEEL ENTERING RELIEF AIR TEMPERATURE EW RLF EAT	X	X											X	
10	ENERGY WHEEL LEAVING OUTDOOR AIR HUMIDITY EW OA LAH	X	X											X	
11	ENERGY WHEEL LEAVING OUTDOOR AIR TEMPERATURE EW OA LAT	X	X											X	
12	ENERGY WHEEL LEAVING RELIEF AIR TEMPERATURE EW RLF LAT	X	X											X	
13	ENERGY WHEEL OUTDOOR AIR BYPASS DAMPER COMMAND EW OA BPD	X		X											
14	ENERGY WHEEL RELIEF-SIDE BYPASS DAMPER COMMAND EW RLF BPD	X		X											
15	FILTER STATUS FIL	X	X										X		
16	HEATING OUTPUT COMMAND HTG	X	X	X											
17	HIGH STATIC ALARM HSP ALM	X	X										X	X	
18	HIGH STATIC ALARM INTERLOCK HSP INTLK	X	X					X							X
19	MIXED AIR LOW TEMPERATURE CUTOFF ALARM MALLT	X													X



# So what's new in Trane® Design Assist™?



Multi Language Support  
(Spanish, French Canadian and Portuguese)



Legend Key and Flow Shape Library additions



“Typical for” item associations



System Design Library additions

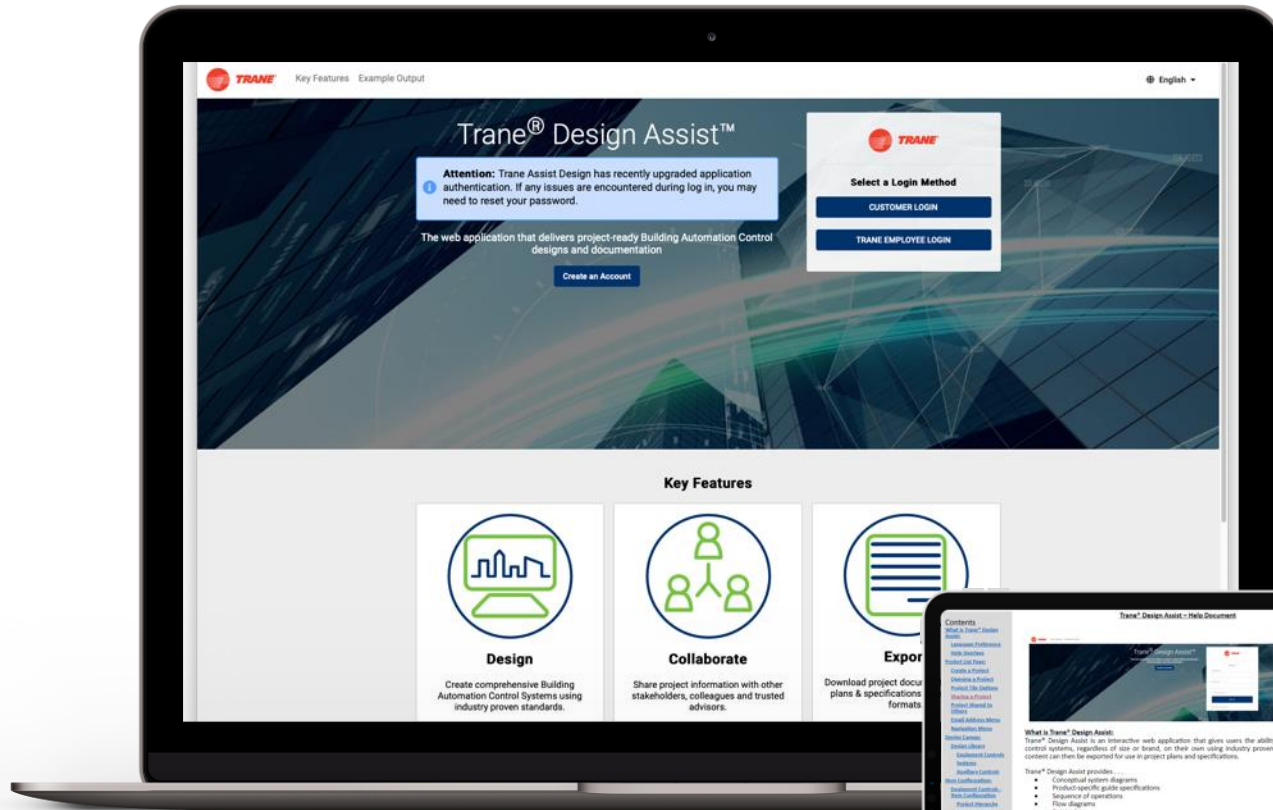


Design Canvas Riser Layouts



Project Guide Specifications

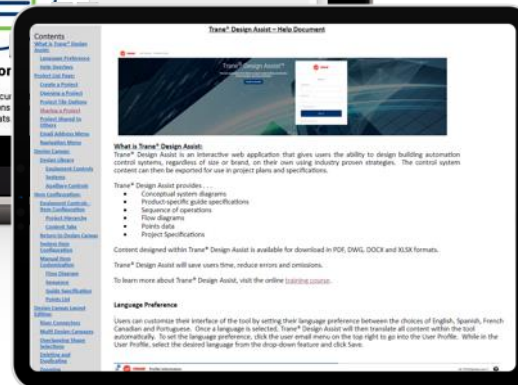
# Training and Support Options



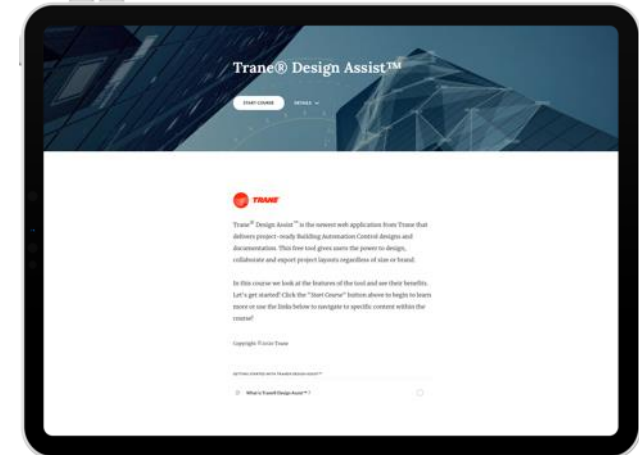
Access Trane® Design Assist™ at  
<https://tranedesignassist.com>



[Introducing Trane® Design Assist™ Video](#)



[In Tool Help Document](#)



[Trane Design Assist Training Course](#)

# What about current industry trends?



## Decarbonization of Buildings

### TRACE 3D Plus

- Analyze Impact of Renewables' Energy Contributions (PV, Wind etc.)
- Quantify and Compare Site or Source Emissions (CO<sub>2</sub>, NO<sub>x</sub>, SO<sub>2</sub>, etc.)
- Compare Greenhouse Carbon Footprint/Equivalence
- Understand, Quantify, and Compare Source Energy Usage



**Electrification  
Renewables  
Energy Efficiency  
Systems**

### Trane Design Assist

- Assemble Energy Efficient sequences of operations & overall control strategies
- Layout heating and heat recovery solutions
- Implement BAS Systems to help go all electric and avoid higher utility bills or equipment inefficiencies.
- Improve building sustainability through simple and convenient control



**TRANE**

# Resources and Support

# Where can you learn more?



To learn more about our tools  
go to [www.tranecds.com](http://www.tranecds.com)

Visit our e-commerce website  
at <https://shop.trane.com>

Contact via e-mail  
at [cdsadmin@trane.com](mailto:cdsadmin@trane.com)  
or [tdasupport@trane.com](mailto:tdasupport@trane.com)

or call us at 608-787-3936





# Thank you!

Any Questions?